

Safety

- Do not cover the ground contact.
- Do not cover the luminaire, hang or fasten anything from it.
- Do not operate if any visible damage can be seen to the product.
- Do not operate if any water ingress has occurred.
- Do not operate if any smoke, steam or crackling noises can be heard from the luminaire.
- Do not operate if any signs of overheating are recognised.
- Avoid installation in any areas where there is a risk of strong mechanical loads.
- Do not place any material over the lens or LED diode/chip.
- Do not insert objects into the luminaire.
- Do not clean using any solvent based abrasive or aggressive product.
- Do not pull any cables connected to the product.
- Do not direct the luminaire into a persons eyes, as this unit may have an intense light output, which if incorrectly used may cause eye damage.
- Light engines/LED'S and other light sources may heat up, please take care when handling the products.
- The manufacturer will not be deemed liable or held responsible for any damages caused by faults or manufacturing defects that may be present in any of its products or the misuse or incorrect installation of this device. Please refer to our trouble shooting guide for further information.
- The manufacturer will not be held liable for any death(s) or injuries caused by misuse or poor installation or any unreported faults of this product version or versions thereof.
- LED's are sensitive to electrostatic discharge. Do not touch the surface of the LED module.
- Do not connect to a temporary electricity supply, this may damage the electronics.
- Light fittings with an integrated emergency option are with a separate installation and wiring leaflet. Please refer to this manual for further details. If the manual is unavailable please contact an ALL LED representative for assistance.
- REPLACE DAMAGED PRODUCT IMMEDIATELY.
- Keep away from children.

Returns & Faulty Items

- If any problem is encountered during or after installation, please call ALL LED technical department to get the problem resolved ASAP.
- Please do not just return the item to the outlet you purchased it from, as you are only entitled to a replacement or refund after the unit has undergone testing and the unit has been confirmed as having a manufacturing defect/fault. Your statutory rights are not affected.
- The manufacturer will not be deemed liable or held responsible for any damages caused by faults or manufacturing defects that may be present in any of its products or the misuse or incorrect installation of this device.
- All installations must be carried out in accordance with this installation guide and user manual.
- All goods are supplied under the terms and conditions of ALL LED LTD, a copy of which may be obtained upon written request.

Environmental Protection
Waste electrical products should not be disposed of with household waste. Please recycle where facilities exist. Check with your Local Authority or retailer for recycling advice



ALL-LED USA LLC
12035 34th St N, Suite 2
St Petersburg
FL 33716 USA

Website: www.all-ledusa.com
Email: sales@all-ledusa.com

This product supplied with a limited warranty, subject to terms and conditions.
The manufacturer will not be deemed liable or held responsible for any damages caused by faults or manufacturing defects that may be present in any of its products or the misuse or incorrect installation of this device. Your statutory rights are not affected.



INSTALLATION GUIDE DIMMABLE LED TROFFER AL-TF2230BD RANGE



ENSURE POWER SUPPLY IS OFF WHEN HANDLING ANY ELECTRICAL EQUIPMENT.

- This product must be installed by a qualified electrical installer.
- Please read this guide in its entirety to fully understand the products before attempting any install.
- All electrical work should be completed in accordance with the latest IET regulations, and/or any other relevant rules, regulations or laws of the country in which it is being installed.
- The item must be installed in isolation from any insulating material and is adequately ventilated to prevent premature failure.
- Ensure power is isolated prior to installation, maintenance or performing any other form of electrical work.
- In the event of incorrect or improper function with specific regard to any of ALL LED's products and contact ALL LED for further advice.

SAFETY WARNING

- ENSURE THE PLASTIC LOCATED ON TOP OF THE LED'S IS NEVER REMOVED OR TAMPERED WITH.
- IF THERE IS ANY VISIBLE DAMAGE TO THIS ITEM, PLEASE ENSURE THAT THE POWER IS SWITCHED OFF AND REMAINS OFF. IMMEDIATELY REPLACE THE UNIT.
- DO NOT TOUCH THE LED CHIPS AT ANY POINT DURING, OR AFTER INSTALLATION OF THE LUMINAIRE AS THERE IS RISK OF ELECTRICAL SHOCK.

SAVE THESE INSTRUCTIONS

- Use only in the manner intended by the manufacturer. If you have any questions, contact us.
- Each luminaire is to be used with Internal driver.
- Wiring to be performed by qualified electrician only.
- Do not wipe the plastic diffuser (covering the LEDs) with harsh/abrasive substances or chemicals.

Product Range	AL-TF2230BD		
RATED POWER	30W	LIFETIME	50,000 hrs
LUMENS 35 40, 50	≤3750	OPERATING TEMPERATURE	-4 ~ +104°F
BEAM ANGLE	120°	VOLTAGE	100 - 277v
CCT 35, 40, 50	3500K, 4000K, 5000K	Dimmable	Yes
CRI	>80	Warranty	5 Years



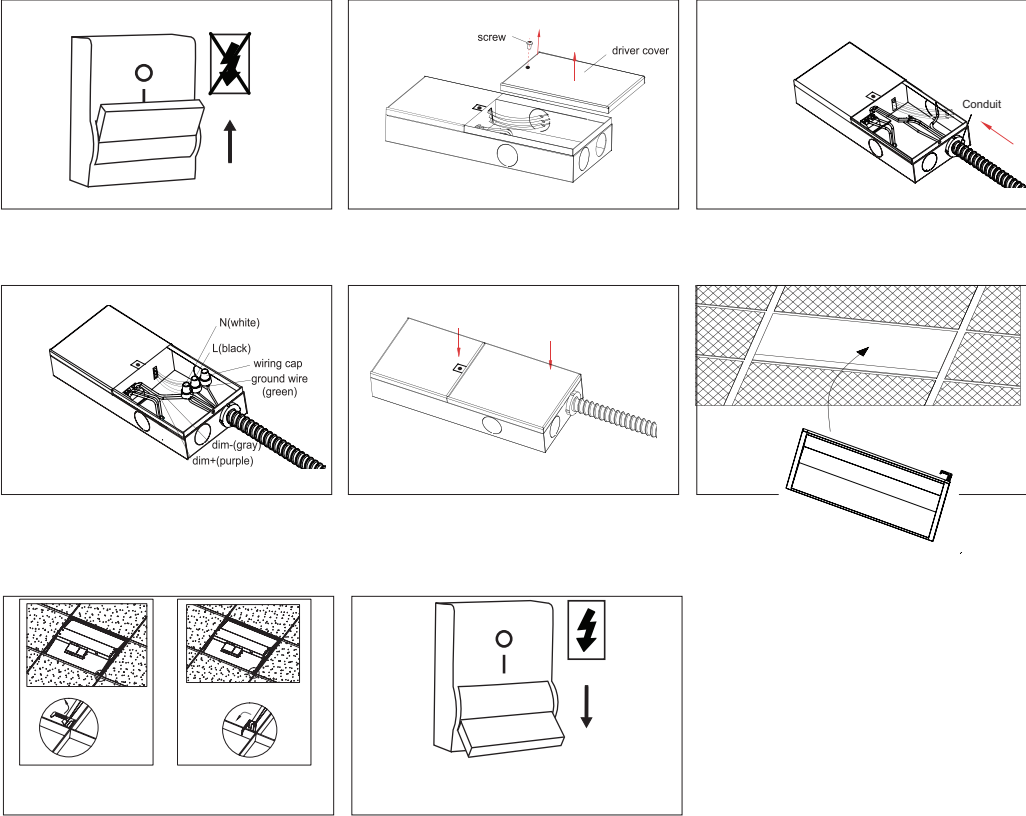
ISOLATE MAINS SUPPLY
BEFORE HANDLING ANY
ELECTRICAL PRODUCTS

New Construction and Retrofit

2' x 2' Dimmable LED Troffer

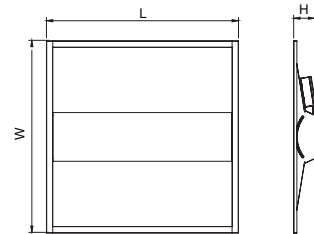


Installation



Use protective brackets for safe installation

Dimensions



Product Code		AL-TF2230BD
Dimensions (inch)	L	23.74"
	W	23.74"
	H	2.61"

New Construction and Retrofit

2' x 2' Dimmable LED Troffer



Troubleshooting Guide

PROBLEM	CAUSE(S)	SOLUTION(S)
No Light Output From LED's	No power to drive components.	A qualified installer/electrician should check the Primary voltage side of the product to check the input voltage.
	Loose connection on circuit.	Ensure continuous and correct connection between terminals.
	Overvoltage may have caused damage to the sensitive components.	These cases are rare and the item may need replacement and/or investigation as to the cause of failure.
LED's Flashing	Incorrect voltage range being used.	Please ensure there is a regulated AC voltage supply within the paramaters of the luminaire. Faliure to do so will void the warranty.
	LED driver may be connected to a mains dimmer switch.	Please remove the dimmer switch and wire the unit to a switch, removing any mains dimmers or other dimmers on the primary side. Use of this product on a dimmer will void the warranty.
	Loose connection on circuit.	Ensure continuous and correct connection between the terminals.



ATTENTION
IF ANY PROBLEMS PERSIST, PLEASE CALL THE ALL LED TECHNICAL DEPARTMENT FOR FURTHER ASSISTANCE.

RISK OF ELECTRIC SHOCK <ul style="list-style-type: none">Turn power off before inspection, installation or removal.Properly ground electrical enclosure.	RISQUES DE DÉCHARGES ÉLECTRIQUES <ul style="list-style-type: none">Coupez l'alimentation avant d'inspecter, installer ou déplacer le uminaire.Assurez-vous de correctement mettre à la terre le boîtier d'alimentation électrique.
RISK OF FIRE <ul style="list-style-type: none">Follow all NEC and local codes.Use only UL or IEC approved wire for input/output connections. Minimum size 18 AWG (0.82mm2).	RISQUES D'INCENDIE <ul style="list-style-type: none">Respectez tous les codes NEC et codes locaux.N'utilisez que des fils approuvés par UL ou IEC pour les entrées/sorties de connexion. Taille minimum size 18 AWG (0.82mm2).